

ProGuard[®] City Barrier

www.safeatsite.com



General

Tested according to EN 1317-2. Approved configurations is shown in the table below.

Barrier length	2,6 m
Containment level	T2
Working width class	W6
Working width	1,95 m
Dynamic deflection	1,55 m
Impact Severity Level (ASI)	A
MIN installation length, unanchored*	36,5 m
Radii capacity	25,2 m
* Minimum 12,9 m of barriers must be installed prior to, and after the work zone	

Installation and handling of City Barriers must be done by qualified personnel.

Always carry out a risk assessment and method description before installation. Inspect and identify possible wear or damages on the products before usage. Never use products that are damaged, rusty or are in general bad condition.

Before installation should the following be inspected and passed for the products to be used:

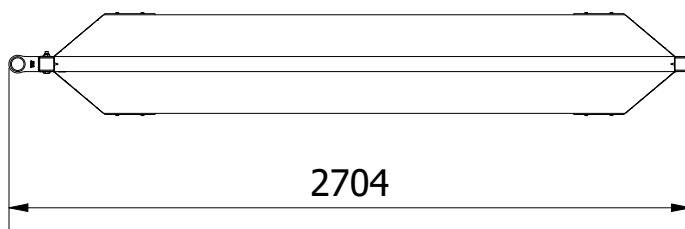
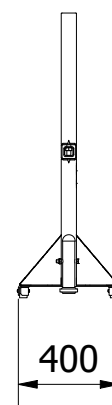
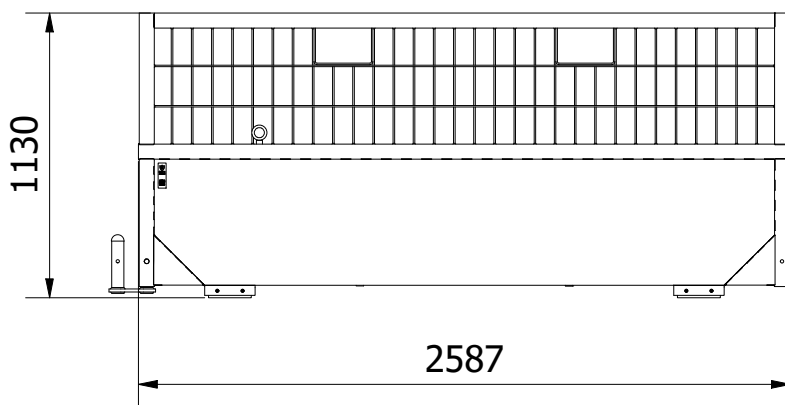
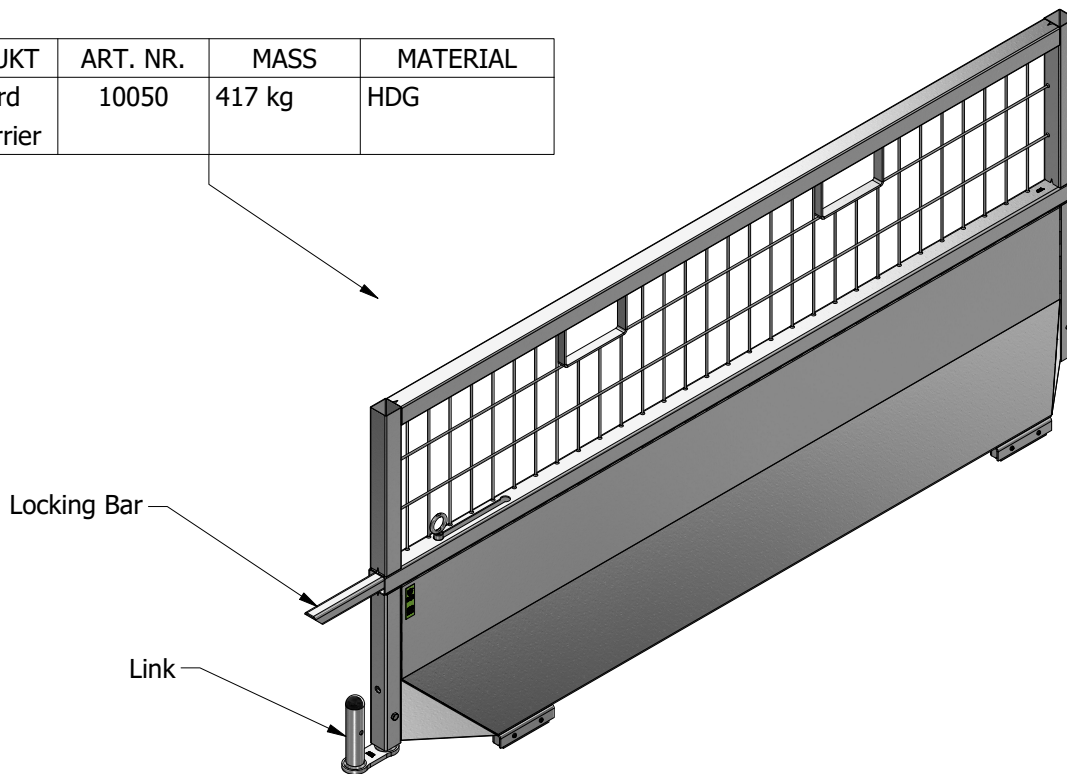
- No damages, cracks, or major deformations on the Locking Bar
- No damages, cracks, or major deformations on the Link
- Minimum 3 mm protruding of the Rubber Foot

Use suitable tools and personal safety gear when handling the products. Always check that lifting material or machines have enough lifting capacity for the task.

Barriers are intended to be used on asphalt. Make sure that the ground is free from dirt, debris and sand before installation.

ProGuard City Barrier

PRODUKT	ART. NR.	MASS	MATERIAL
ProGuard City Barrier	10050	417 kg	HDG

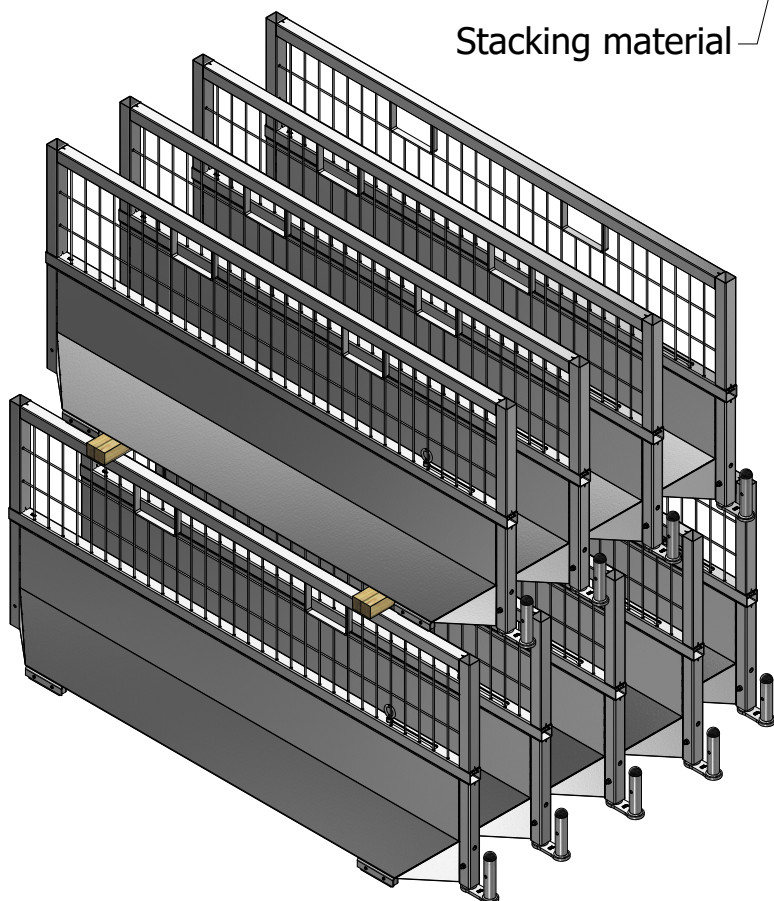
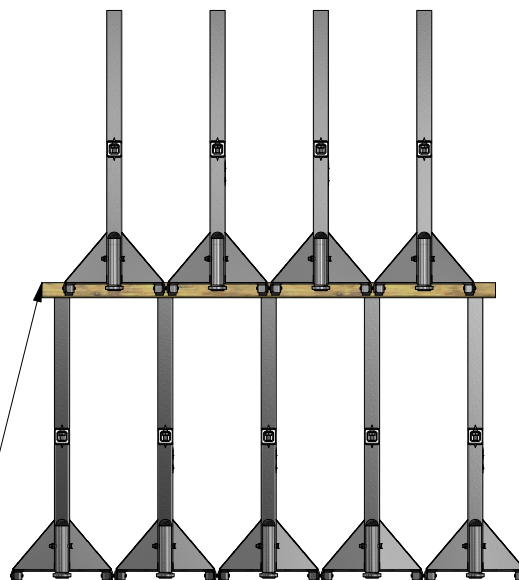


Storage and handling



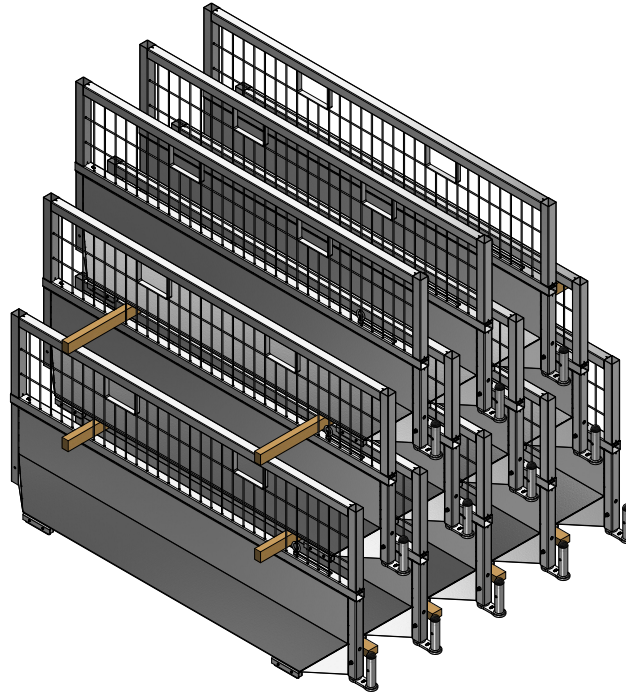
MAX x 2

Stacking material

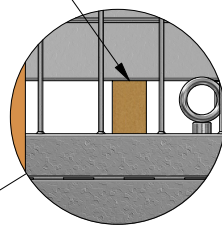


Storage and handling

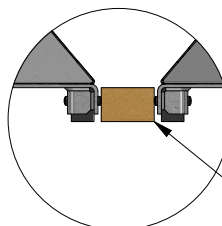
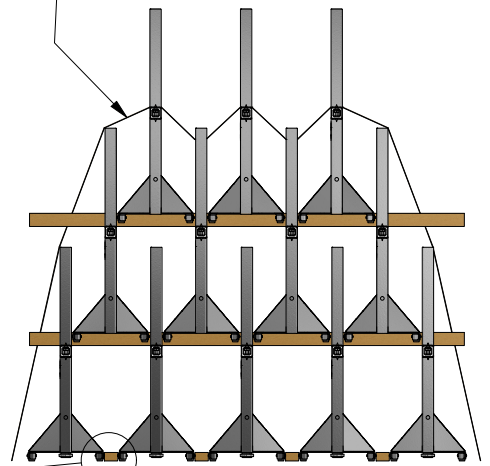
Alt 2.



Standing 45x70 - 2300mm



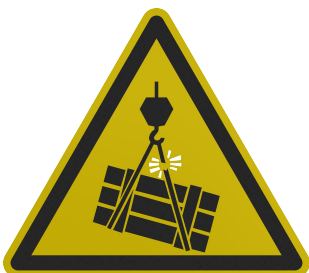
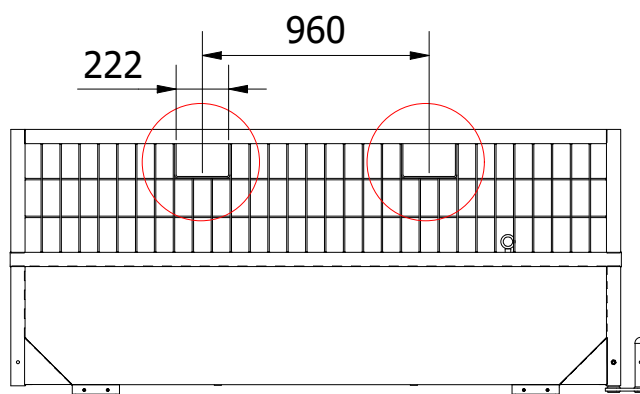
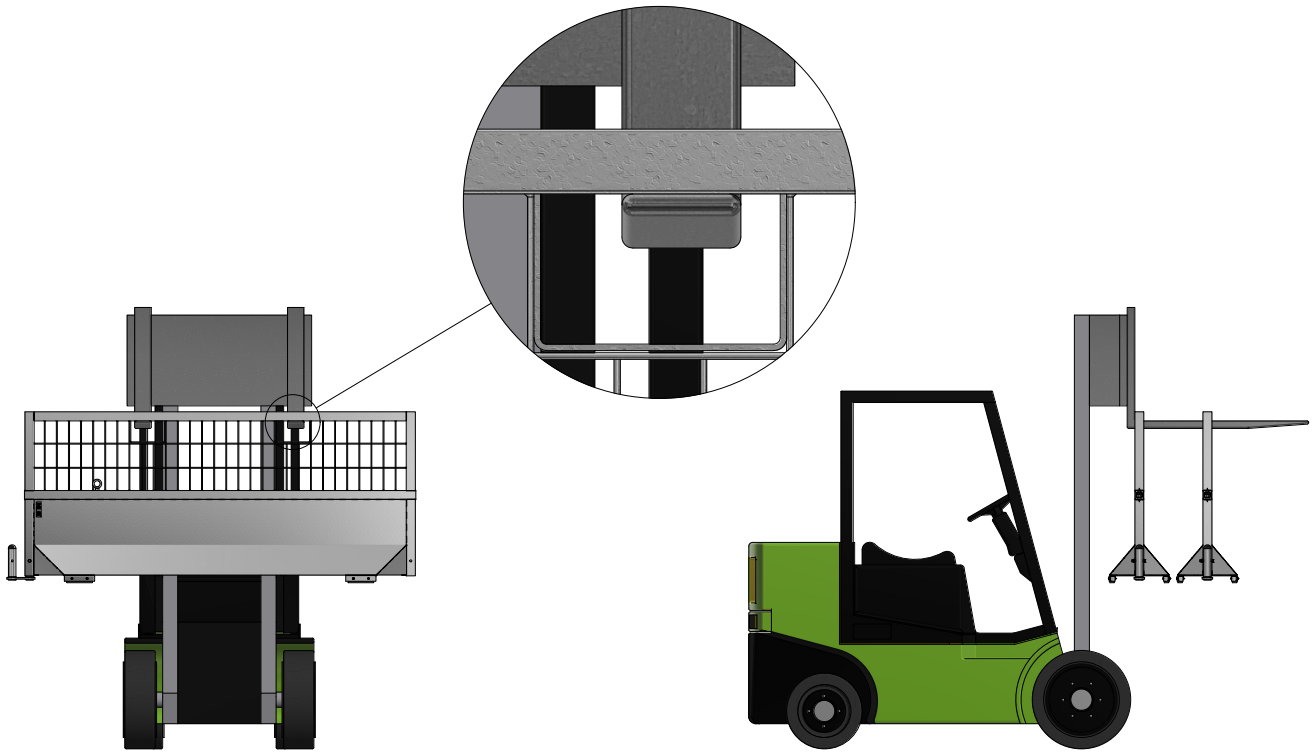
Secure during transport



Flat 45x70

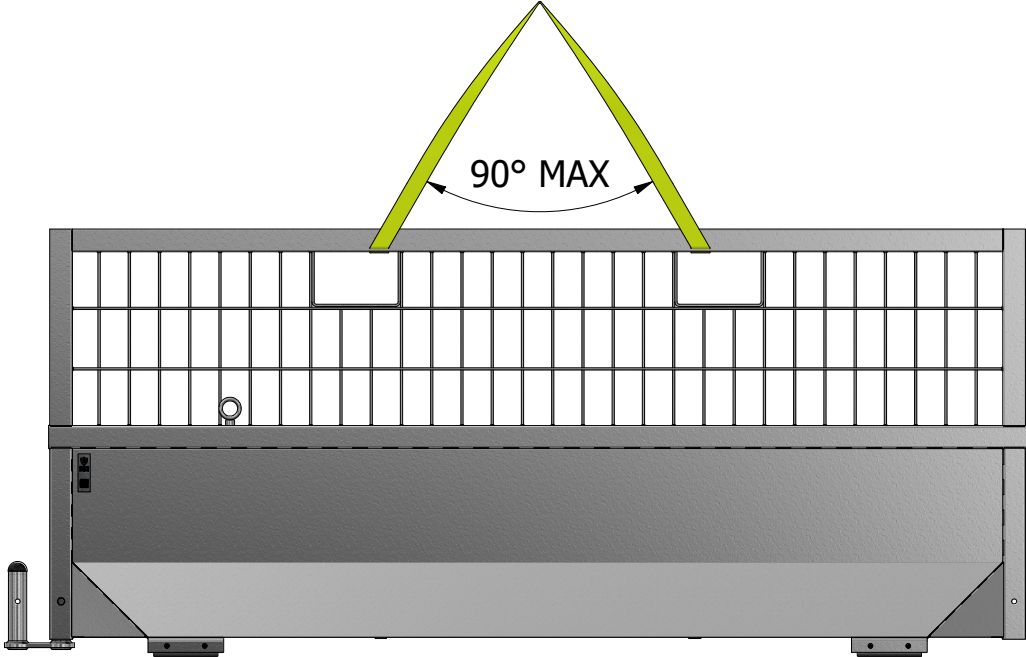
Handling - Lifting

Alt. 1 - Forklift/Wheel Loader

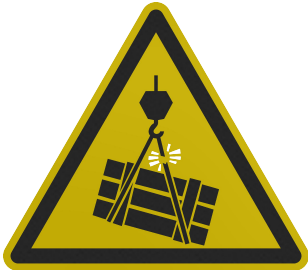


Handling - Lifting

Alt. 2 - Sling



 417 kg



Handling - Lifting

Alt. 3 - Lifting hook

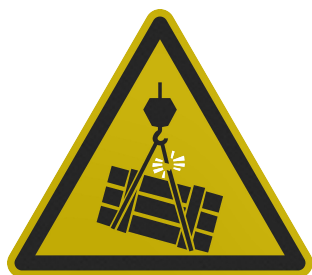
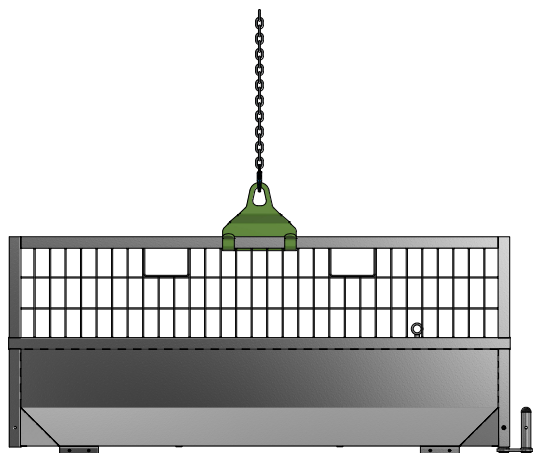
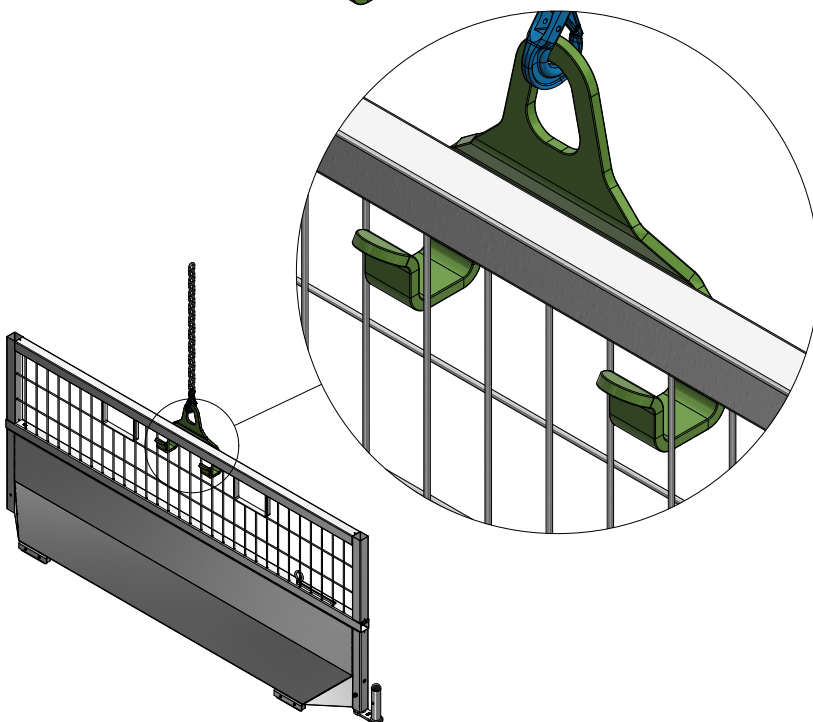
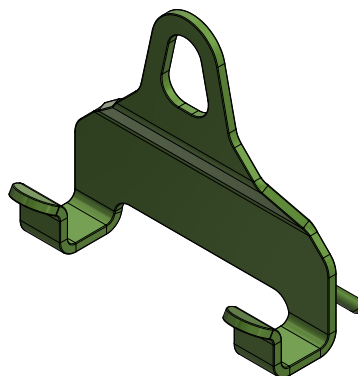
City Lifting Hook

Art. nr 10200

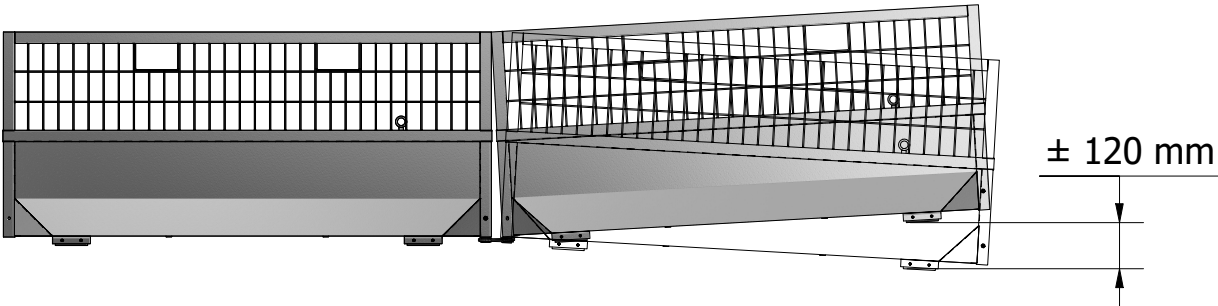
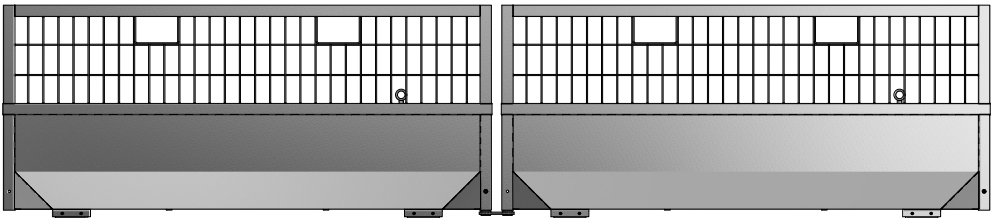
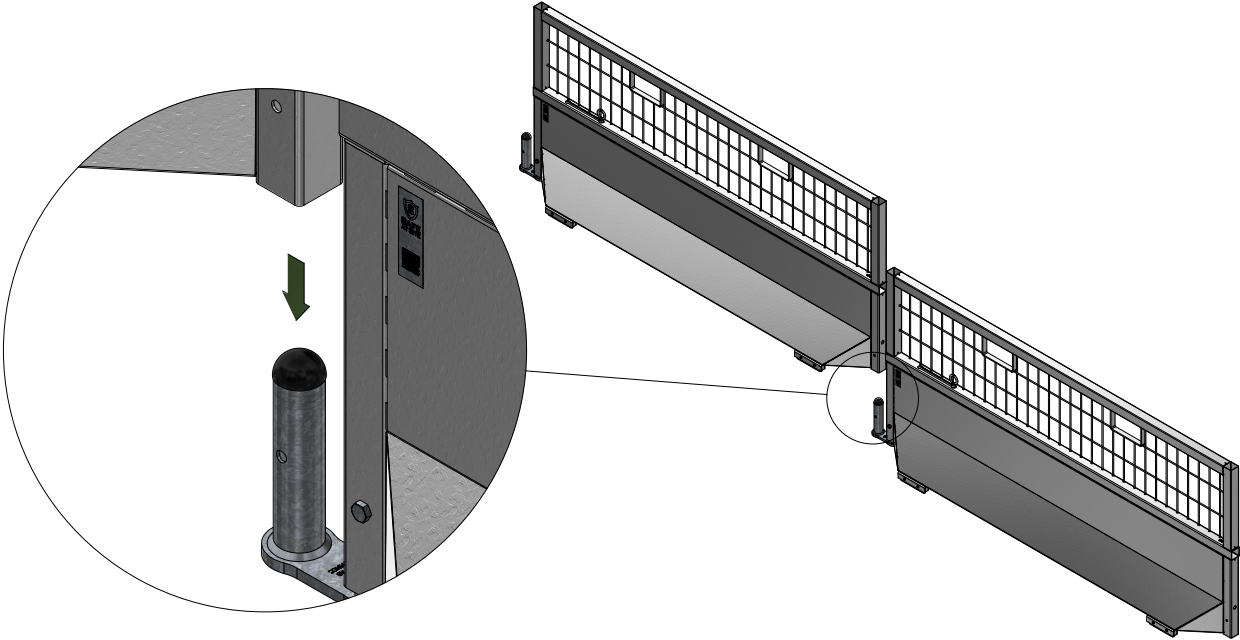
Max lifting capacity 500 kg

CE Acc. to 2006/42/EG

kg 8,6 kg

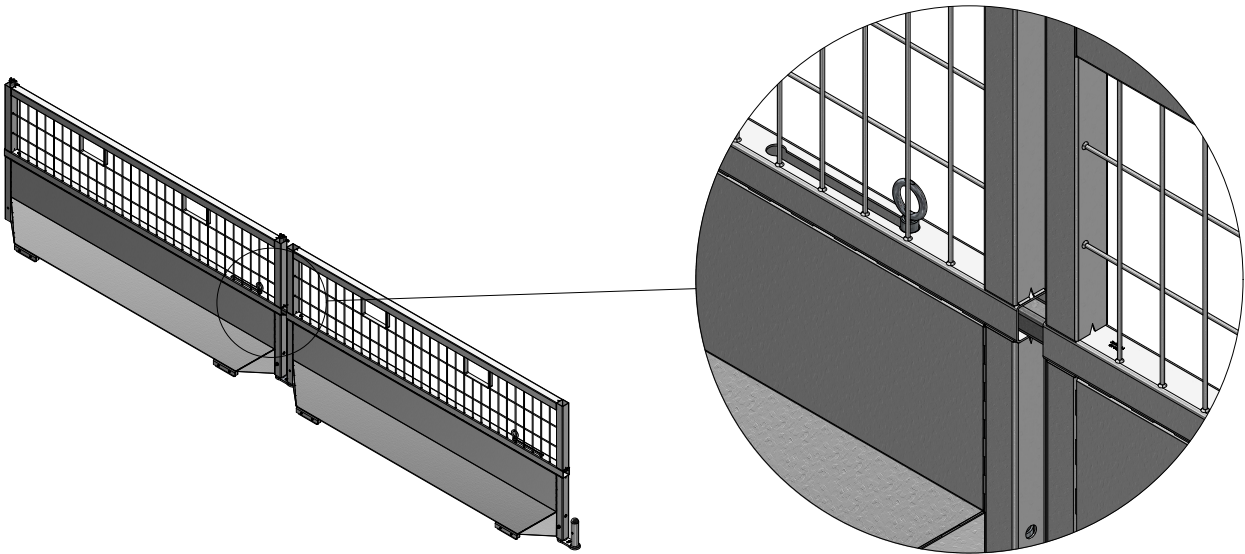
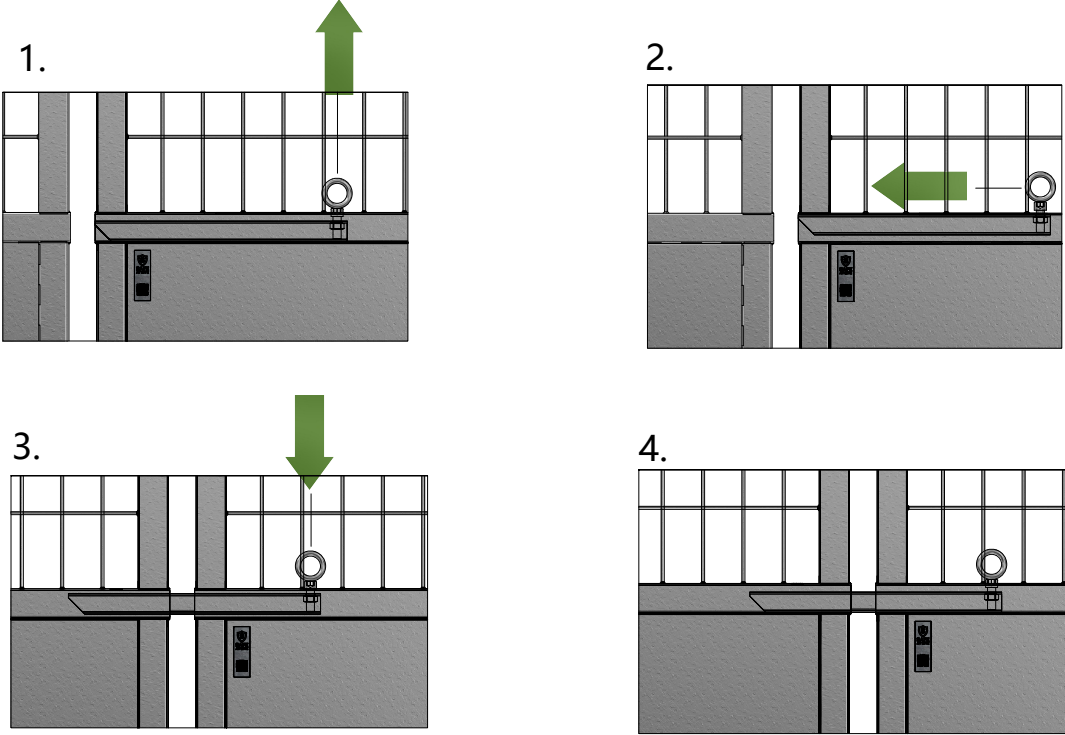


Installation

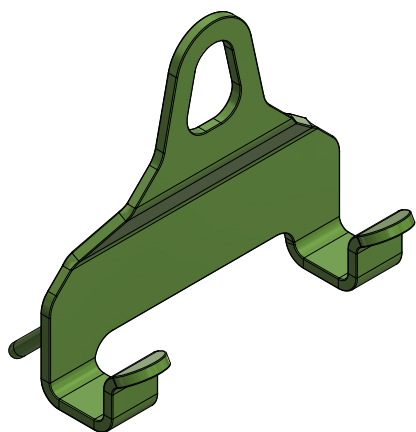


Straight sections

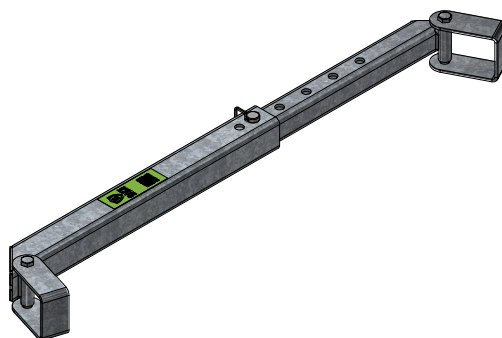
Locking Bar is activated when installing straight sections for increased strength and stability.



Accessories



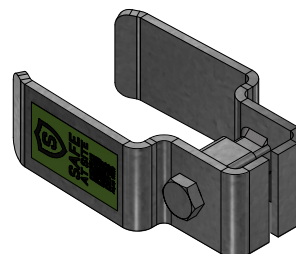
City Lifting Hook
Art. nr 10200



Corner Beam
Art. nr 10078



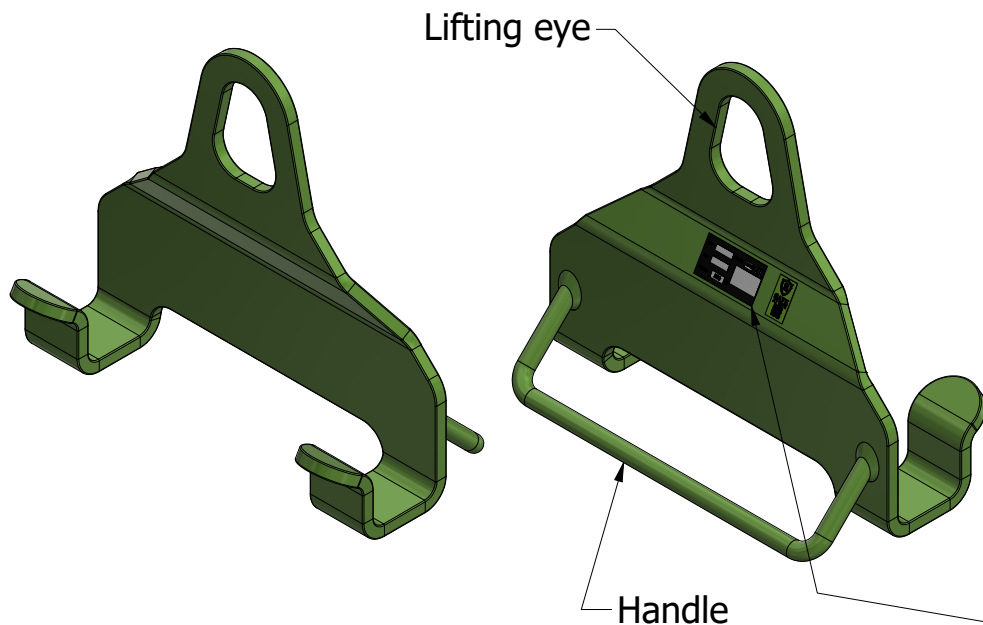
City PC Attachment
Art. nr 10120



City X3 Attachment
Art. nr 10125

Accessories

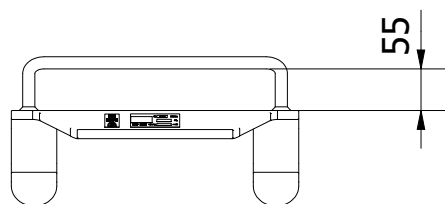
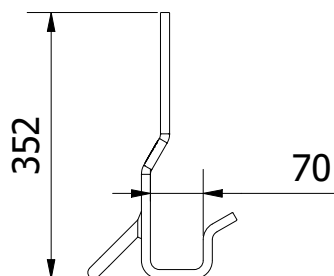
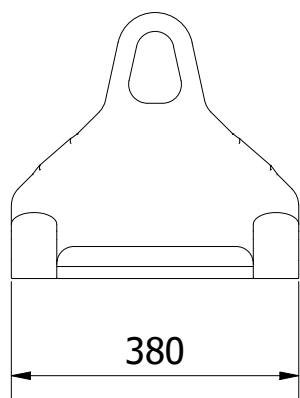
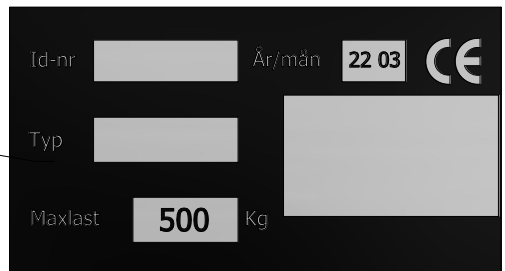
Lifting Hook



City Lifting Hook
 Art. nr 10200
 Max Lifting capacity 500 kg

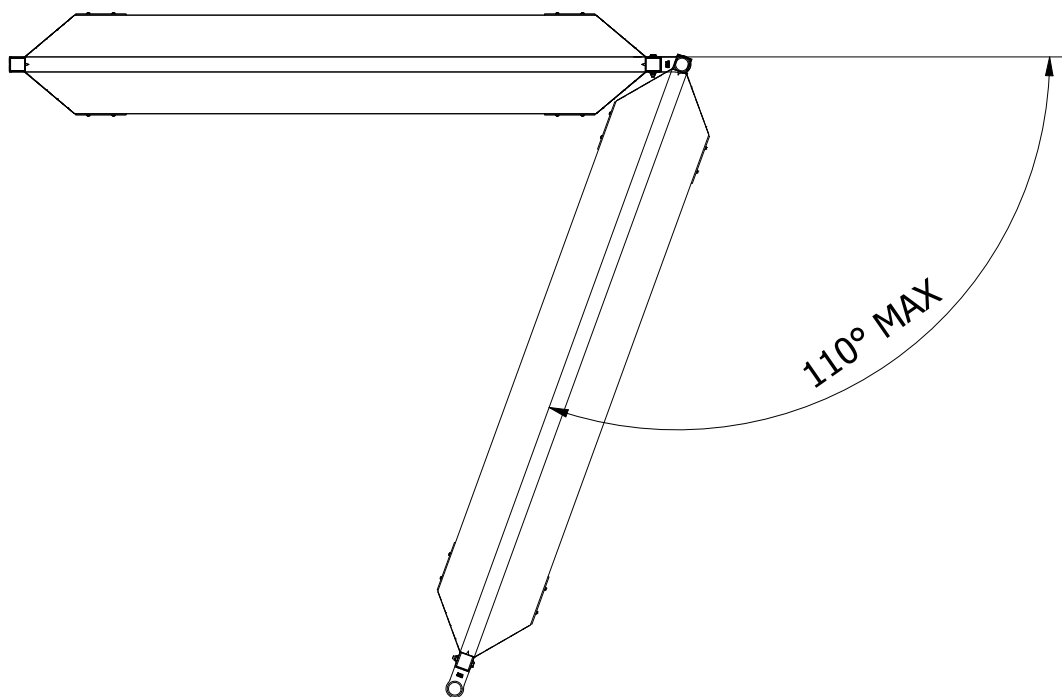
CE Enligt 2006/42/EG

kg 8,6 kg

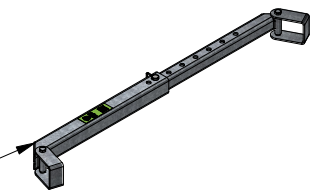


Accessories

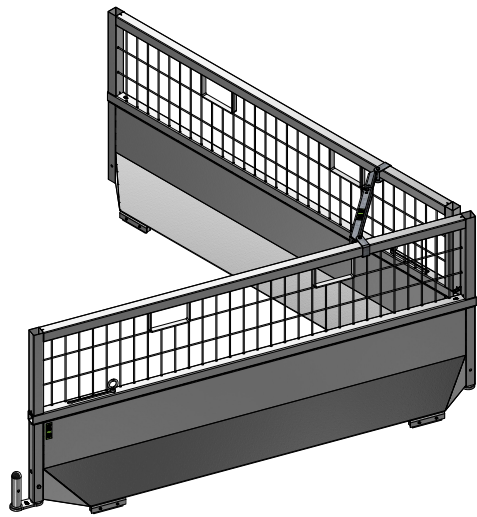
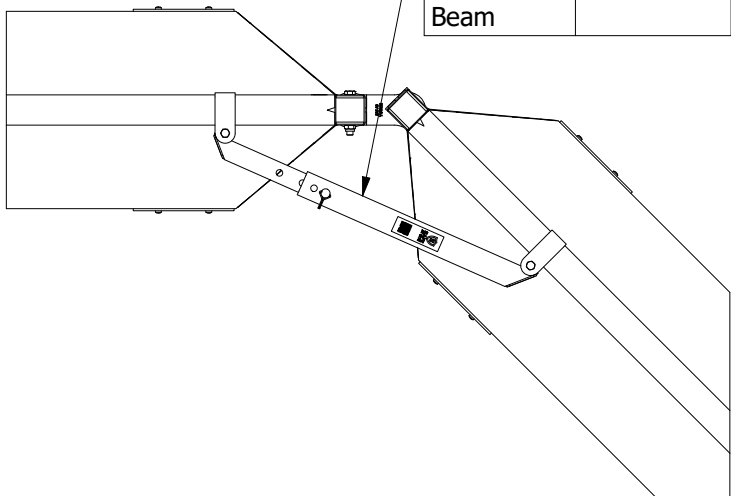
Corners



Use Corner Beam to strengthen sections in corners.



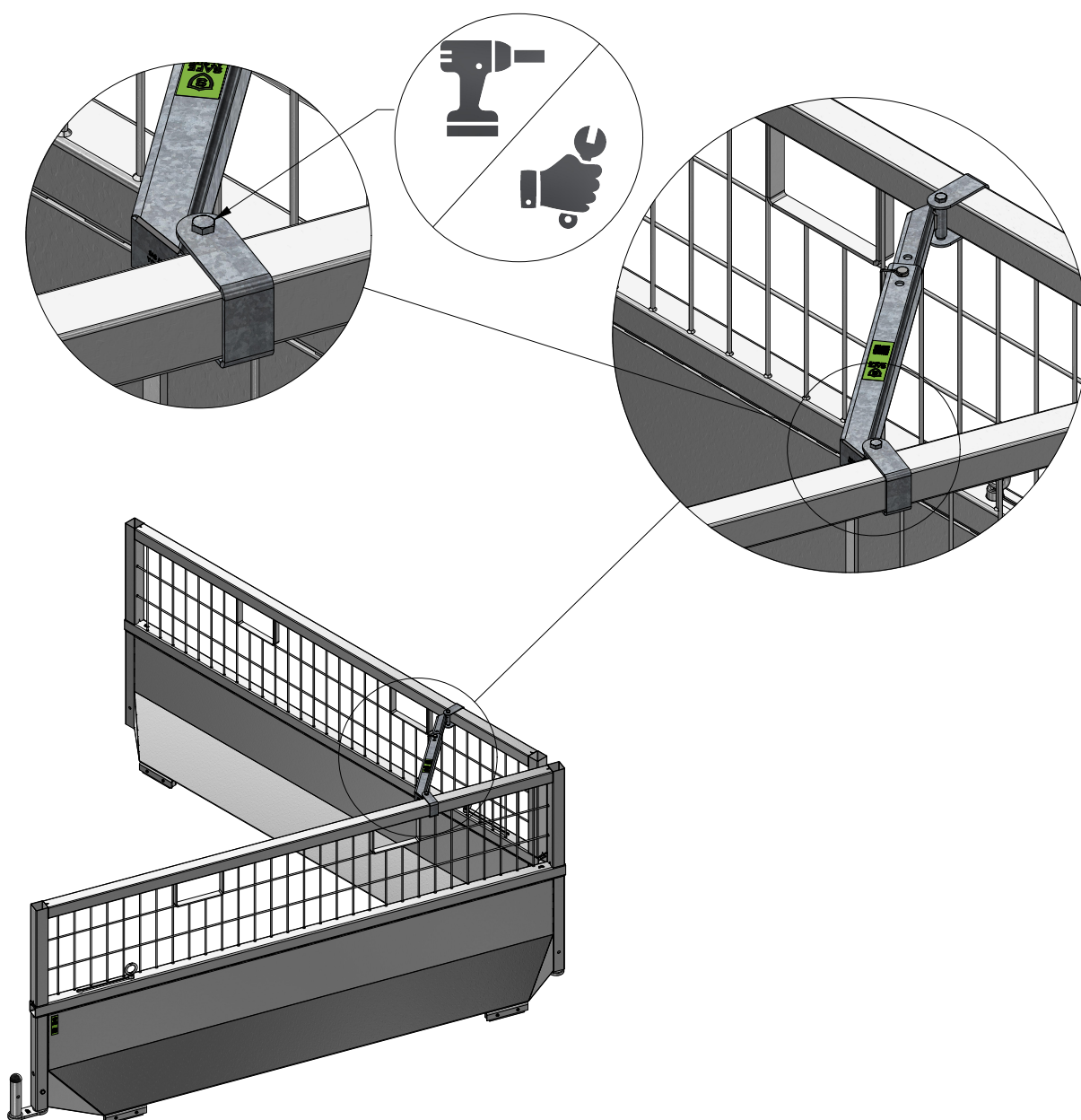
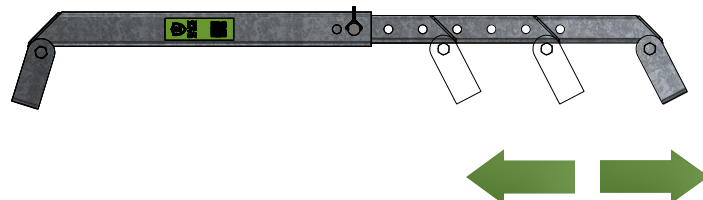
PRODUCT	ART. NR.	MASS	MATERIAL
Corner Beam	10078	5,6 kg	HDG



Accessories

Corners

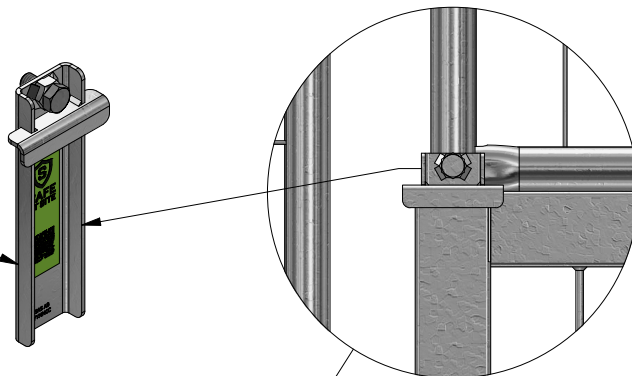
Adjust the size of the Corner Beam using the locking pins. Place it in the corner section and secure it.



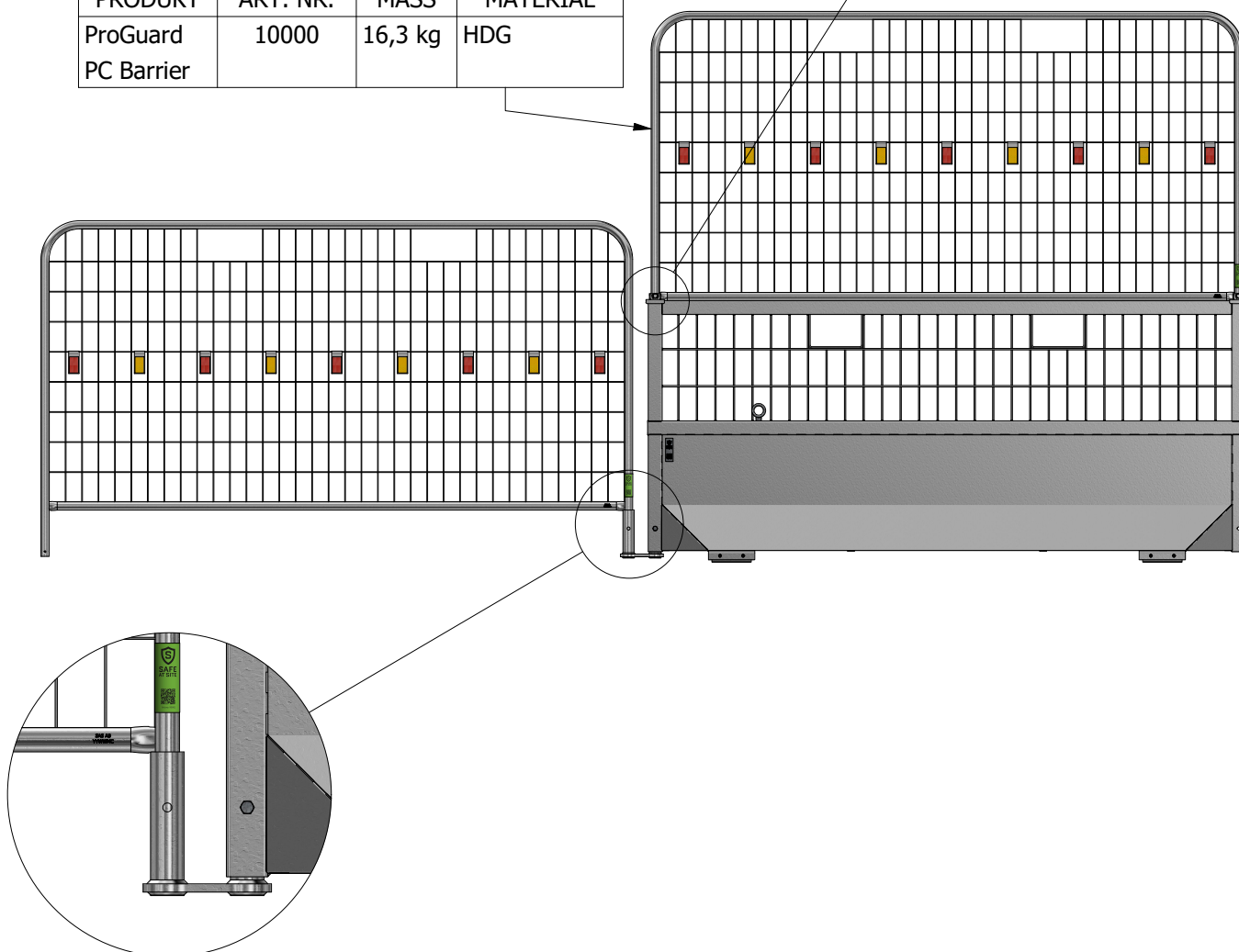
Accessories

City PC Attachment

PRODUCT	ART. NR.	MASS	MATERIAL
City PC Attachment	10120	0,5 kg	HDG

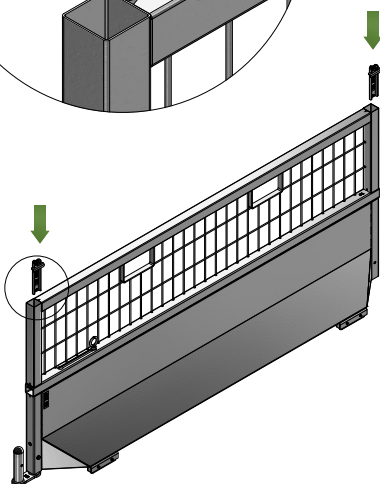
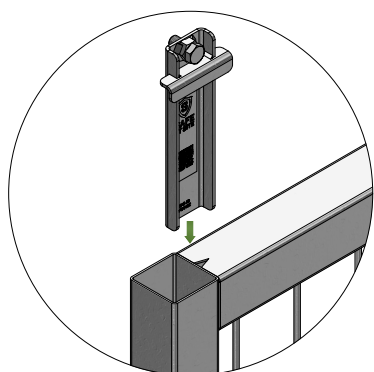


PRODUKT	ART. NR.	MASS	MATERIAL
ProGuard PC Barrier	10000	16,3 kg	HDG

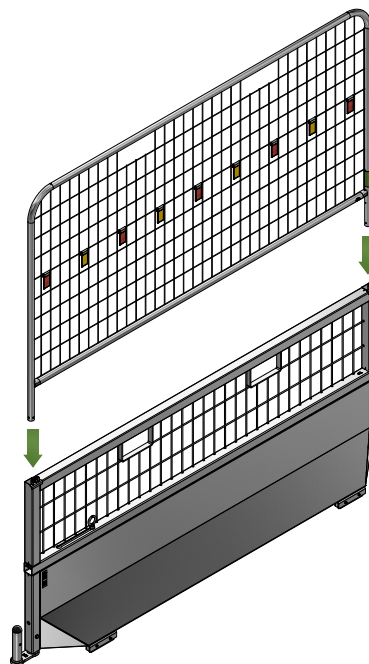


Accessories

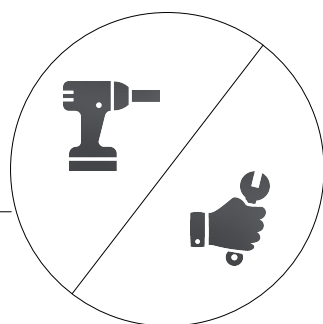
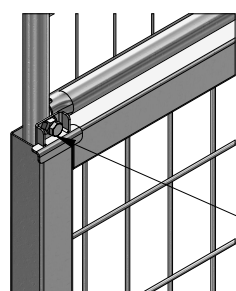
PC Barrier



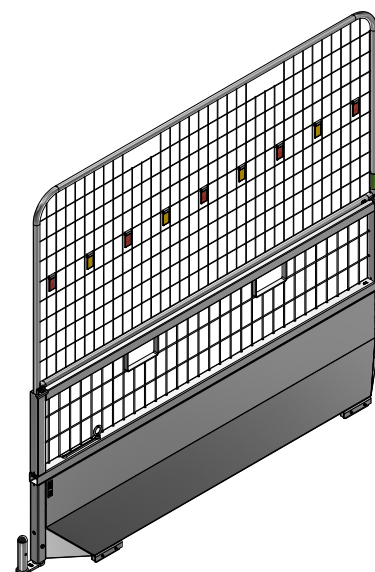
1.



2.



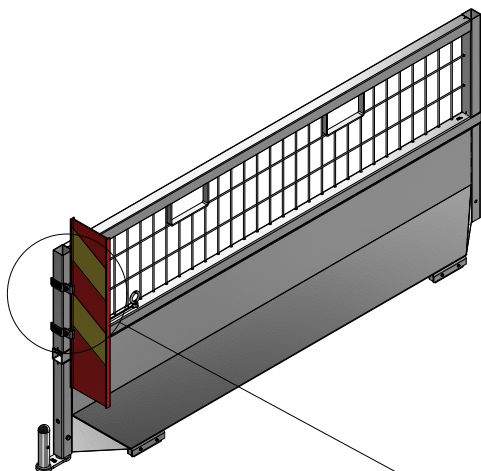
3.



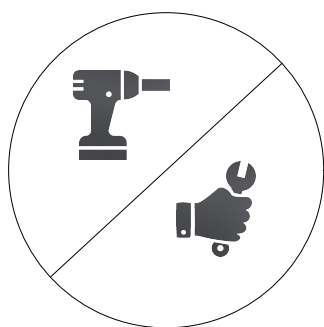
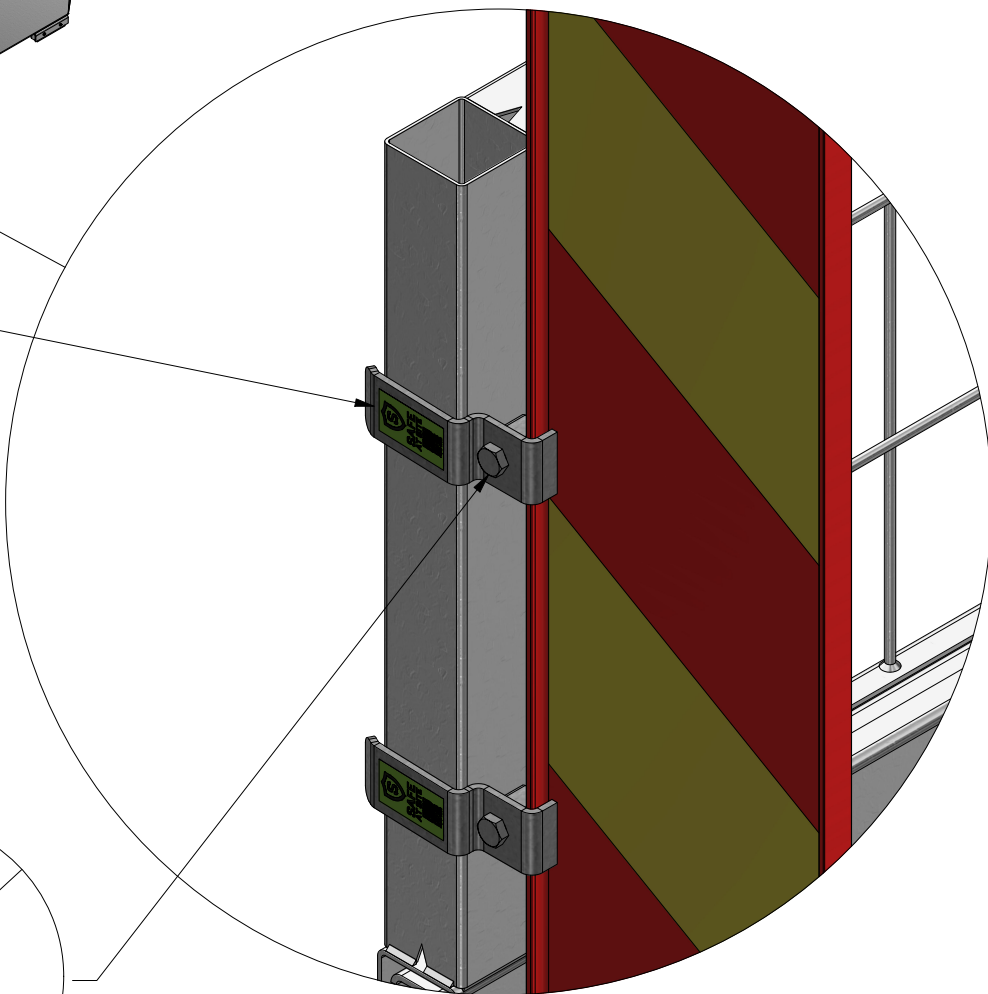
4.

Accessories

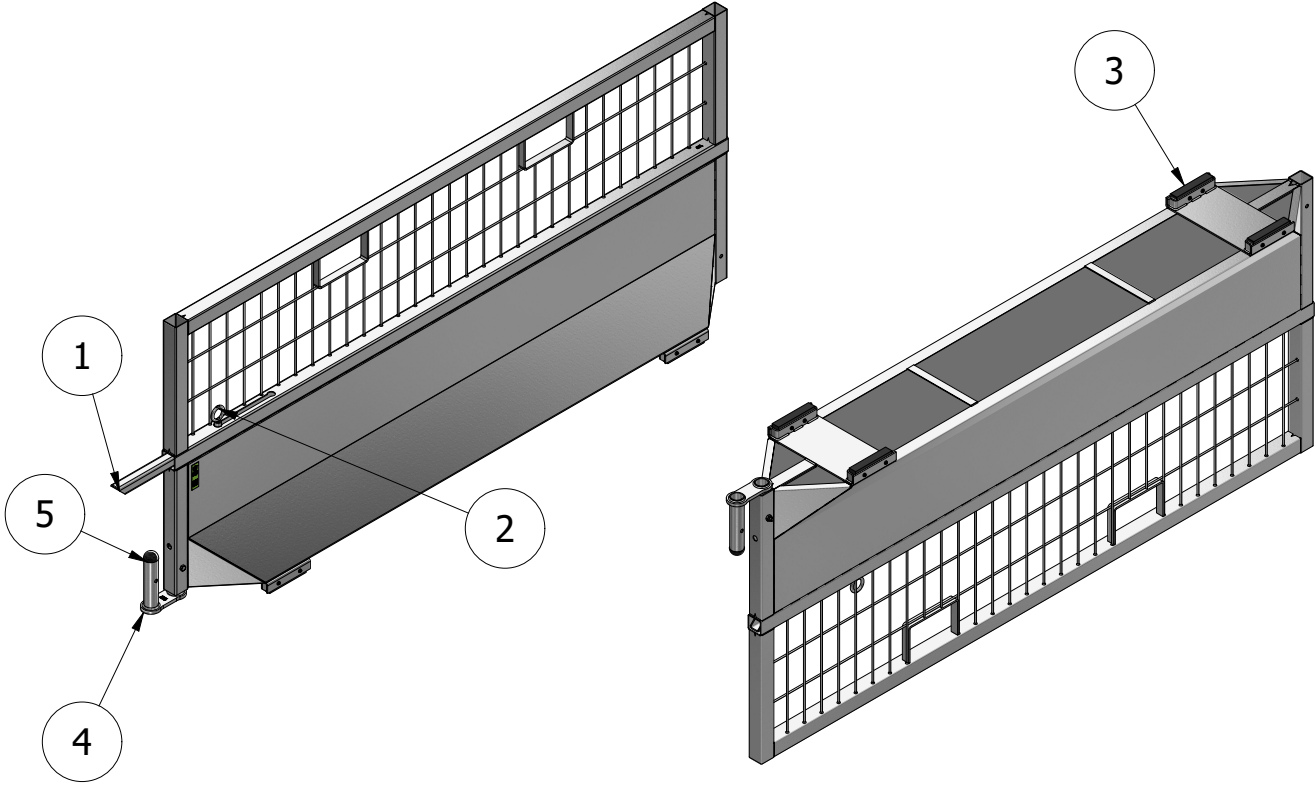
City X3 Attachment



City X3 Attachment
Art. nr 10125



Spare parts



NR.	PRODUKT	ART. NR.	MATERIAL
1	Locking Bar	10051	HDG
2	Eye Bolt	10052	HDG
3	Rubber Foot - 170 mm	10053	Rubber
4	Link	10054	HDG
5	Plastic Plug Ø48 mm,	90031	Polyethylene